

V-TAC

Meaningful Innovation.

WEEE Number: 80133970

INSTRUCTION MANUAL

SOLAR LED FLOOD LIGHT



IP65
RATING

INTRODUCTION

Thank you for selecting and buying V-TAC product. V-TAC will serve you the best. Please read these instructions carefully before starting the installation and keep this manual handy for future reference. If you have any another query, please contact our dealer or local vendor from whom you have purchased the product. They are trained and ready to serve you at the best.



This marking indicates that this product should not be disposed of with other household wastes.

RoHS   



MULTI-LANGUAGE MANUAL QR CODE

Please scan the QR code to access the manual in multiple languages.

TECHNICAL DATA

MODEL	VT-411 CCT	VT-432
SKU	23756	10310, 10311,
LUMENS	1500 LM	4800 LM
EQUIVALENT WATT	100 W	300 W
LEDs	SMD 2835x88 pcs	SMD 2835x90 pcs
BATTERY PACK	Li-ion Battery, 18650 3.7V, 3600mAh, 13.32Wh	LiFePO4 Battery, 32700, 6.4v, 6000mAh, 38.4Wh
MONO SOLAR PANEL	4.5W, 6V	12.5W,10V
DIGITAL PIR SENSOR	120°/6 Meters	120°/8 Meters
LIGHTING AREA	60-80m ²	100-150m ²
LAMP SIZE	152,7 x 146,8 x 31,2 mm	199,7x189x189,9x49mm
SOLAR PANEL SIZE	202,1x220,9x24mm	354x254,2x38,3mm
INSTALLED HEIGHT	2~4 Meters	2~5 Meters
INSTALLATION DISTANCE	6-8 Meters	10-14 Meters
WARRANTY	2 Years Warranty(Battery 1 Year)	3 Years Warranty
BEAM ANGLE	120°x60°, Maximum Lighting design, Bigger Lighting Area	
WORKING MODES	Auto Sensor Mode Keep Lighting Mode (Can DIY Brightness and lighting time by remote)	
CHARGING TIME	5-6 Hours Strong sunshine to fully charge	
LIGHTING TIME	Up to 60Hours according to different working mode	
LAMP BRACKET	360° Adjustable	
SOLAR PANEL BRACKET	270° Adjustable	
CONNECTION CABLE	5 Meters Long	
HOUSING MATERIAL	ABS+PC+ALUMINIUM, Anti-UV, V0 Fireproof	
PACKING	1 Lamp, 1 Solar Panel, 1 Remote Control, 4 Set Screws,1User Manual	

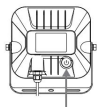
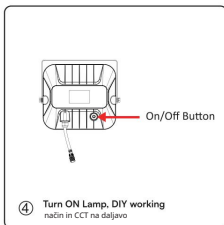
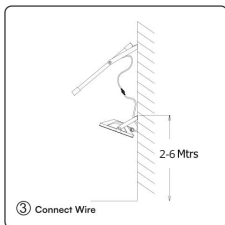
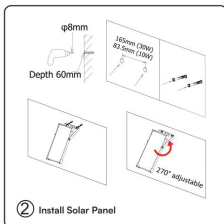
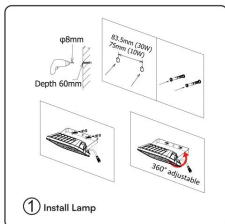
WARNING

1. This is a solar powered lamp, please install the solar panel in a location where can get enough sunshine.
2. Please note the lighting time depends on sunshine duration & working mode.
3. The On/Off button on the lamp is power-off switch, helpful to save power consumption. Also the lamp can still get solar charge at day time when the lamp is turned off.
4. Built-in intelligent IC is with over-charge and over-discharge protection, safe & durable.
5. Non-professionals please do not disassemble the lamp.
6. Please do not dispose the battery with household garbage to avoid explosion.

INSTALLATION

Prepare the lamp, accessories and tools well, confirm the installation location and wire length.

1. Drill 2 holes of ϕ 8mm with a depth of 60mm on the wall, fix the lamp on the wall with expansion plugs and screws.
2. Drill 2 holes of ϕ 8mm with a depth of 60mm on the wall, fix the solar panel on the wall with expansion plugs and screws.
3. Connect the wire of the solar panel to the lamp and screw it tightly.
4. Press the button on the lamp to activate the remote control, then use remote control to set desired working mode in CCT.



Gumb za vklop/izklop

Najprej pritisnite gumb na svetilki, lučka se vklopi in samodejno preklopi v način ohranjanja osvetlitve (privzeti način). Ponovno pritisnite gumb, lučka ugasne.

Ko se lučka prižge, uporabite daljinski upravljalnik za izbiro želenega načina dela in CCT.

Ohrani način osvetlitve (privzeti način)



Lučka samodejno zasveti ponoči in ohranja 60 % 3 ure, glede na to, katera lučka se preklopi v senzorski način.

V tem načinu lahko z daljinskim upravljalnikom izberete želeni čas osvetlitve in svetlost.

Na primer:

Pritisnite \oplus + 5H 40% . svetilka bo delovala kot sledi:

Lučka samodejno sveti ponoči in ohranja 40%

svetlinosti 5 ur, ko se lučka preklopi v senzorski način.

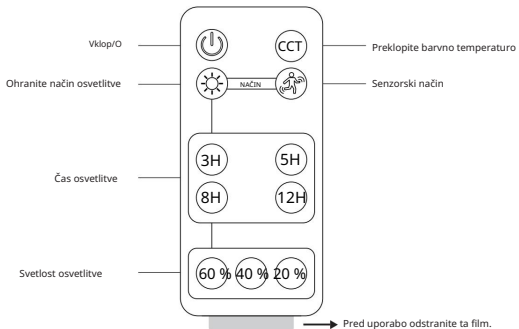
Senzorski način



Svetilka samodejno zasveti ponoči in se obrne na polno svetlost, ko je v območju zaznano gibanje, nato pa po 30 sekundah brez gibanja zasveti na 5 %.

OPERATIONS OF DIY WORK MODE IN CCT BY REMOTE CONTROL

- * Pred uporabo odstranite izolacijsko folijo daljinskega upravljalnika.
- * Razdalja daljinskega upravljalnika: 6 metrov.
- * Vsakič, ko pritisnete gumb na daljinskem upravljalniku, lučka enkrat utripne.
- * VKLOP/IZKLOP na daljinskem upravljalniku ima funkcijo pomnilnika.
- * Svetlost in čas osvetlitve je mogoče prilagoditi samo v načinu Keep Lighting.



OPERATION OF INDICATOR LIGHT

This lamp has a red indicator light, which shows the charging state of the lamp.

Stanje indikatorske lučke čez dan	Delovni status solarne svetilke
Vedno vklopljen	Svetilka je popolnoma napolnjena.
Utripa vsake 3 sekunde	Solarna plošča se polni normalno.
NIČ	Sončna svetloba okolice ni dovolj močna da se solarna plošča napolni.

Stanje indikatorske lučke ponoči	Delovni status solarne svetilke
NIČ	Svetilka se prazni in dobro deluje.
Utripa vsako sekundo	Svetilka se prazni in deluje dobro, vendar je moč baterije manjša od 30%.

WIDE APPLICATIONS

Widely used for construction site, gate, courtyard, corner, garden, industrial area, warehouse, garage, parking lot, roof, factory, pathway, farm, pavilion, countryside, pergola, bus station etc.